



Guide

# DataMatch Enterprise Server + API

## Live Search in Two Tables



68 Bridge, St. Suite 307  
Suffield, CT 06708



+1 888-779-6578



[Sales@DataLadder.com](mailto:Sales@DataLadder.com)



[www.DataLadder.com](http://www.DataLadder.com)

## Table of Content

Installation .....	3
Preconditions .....	4
System Requirements .....	5
Settings .....	5
How to use .....	6

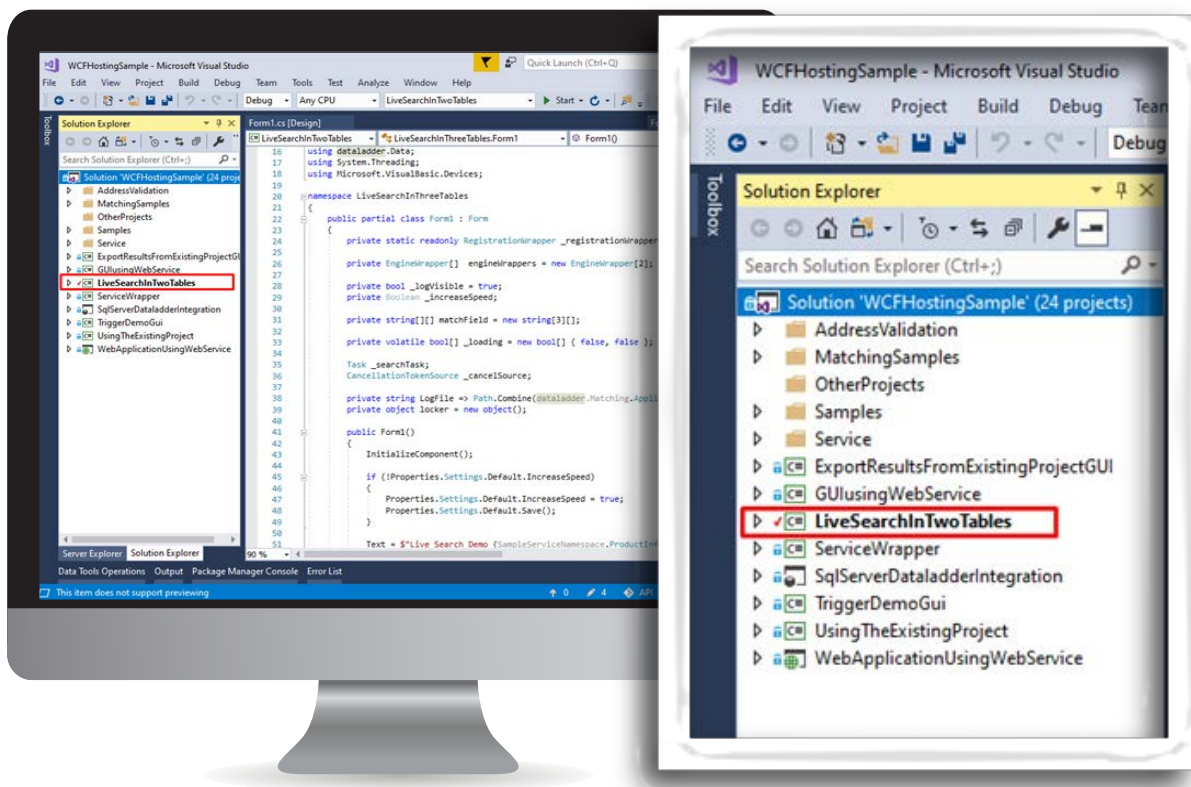
# Intro

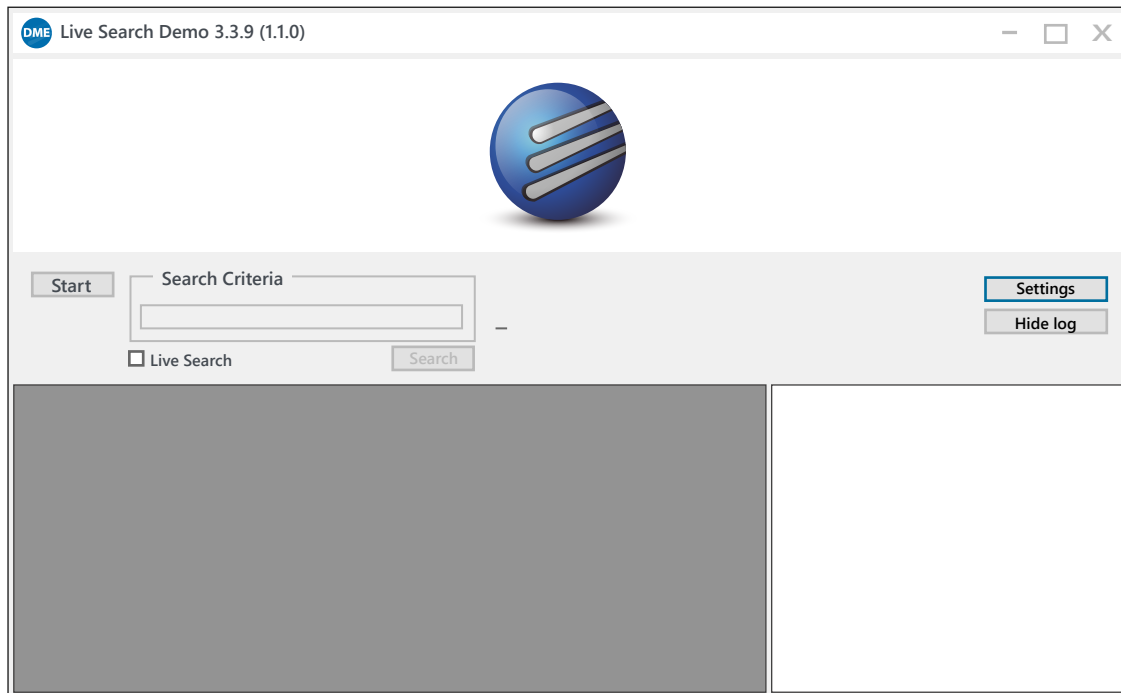
'Live Search In Two Tables' is the example of a standalone application which works with DME's API. This application collects and joins results from few independent data sources.

This example can work with simple match definitions or with multiple definitions with cross column and group search advanced options.

## Installation

Open "Samples" folder. Open solution in Visual Studio. Choose "LiveSearchInTwoTables" project. Start it.





## Preconditions

There are some restrictions that must be executed:

1. Get API registration key from DataLadder Sales Team.
2. Register this key in Datamatch Enterprise (DME version should not be less than 3.1.7)
3. Restart API application
4. Create a project in Datamatch Enterprise.
  - The Match Configuration Tab Settings do not affect the results of Live Search
  - Add a definition(s). Definition could contain few criteria with/without advanced options
  - Save the project
  - Close the project. If the project is open in the DME, we will not be able to work with it in 'Live Search In Two Tables'

**Note: No need to run matching in DME.**

## System Requirements

Application uses API libraries in the mode that consumes memory and decreases searching time. It requires a lot of RAM.

For example, for processing data sources with 20 ... 100 million records, PC must have 32... 128 Gb RAM.

Approximate system requirements are shown in the table below:

Quantity of records in huge data sources	Minimun Requirements	Recommend Requirements
Less than 10 millions	RAM: 16 GB OS: 64 Bit	RAM: 32 GB OS: 64 Bit
20 - 100 millions	RAM: 64 GB OS: 64 Bit	RAM: 128 GB OS: 64 Bit

**Note:** If 'SystemOutOfMemoryException' critical error happens while the application is running, it means that memory is not enough.

## Settings

- First start of the application:
  - Press 'Settings' button
  - Click 'Choose project file' and select the DME project from pre-conditions step
  - Increase speed – ability to use optimized search algorithm
  - Close window

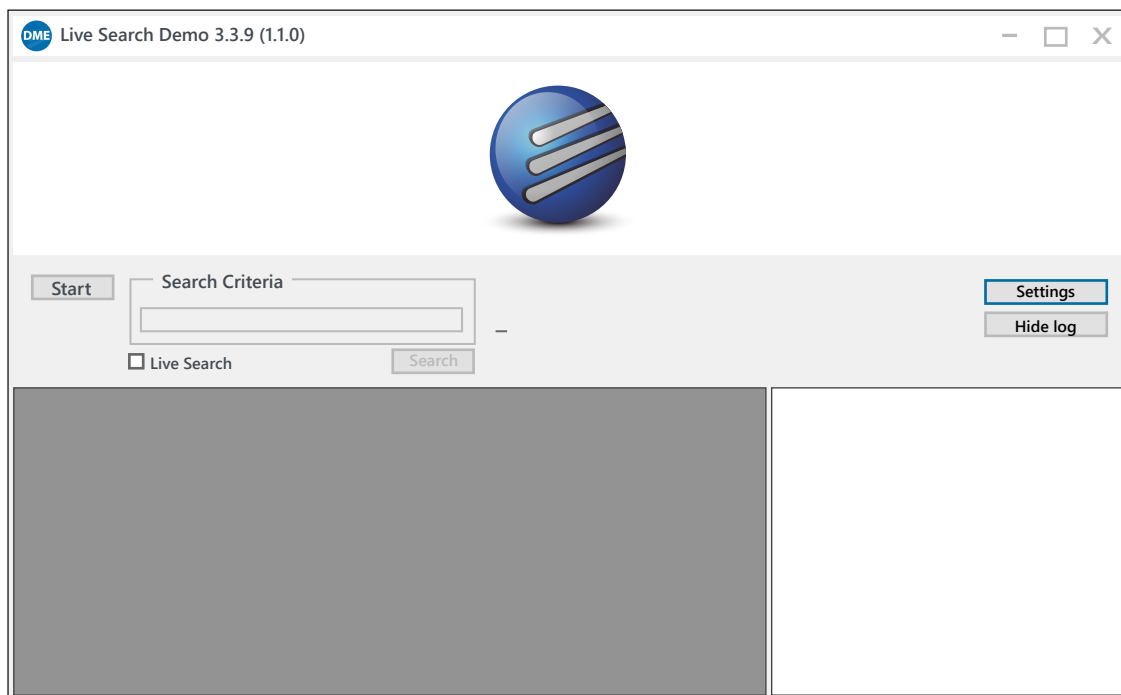
**Note:** If user is going to work with these projects in a future, no need to set up above settings. They would be automatically taken.

There are path settings in the bottom part of the window. During first attempt, path settings are loaded from DME settings. If user wants use different folders for API and DME it can be done by changing paths in the text boxes and pressing 'Save paths' button.

## How to use

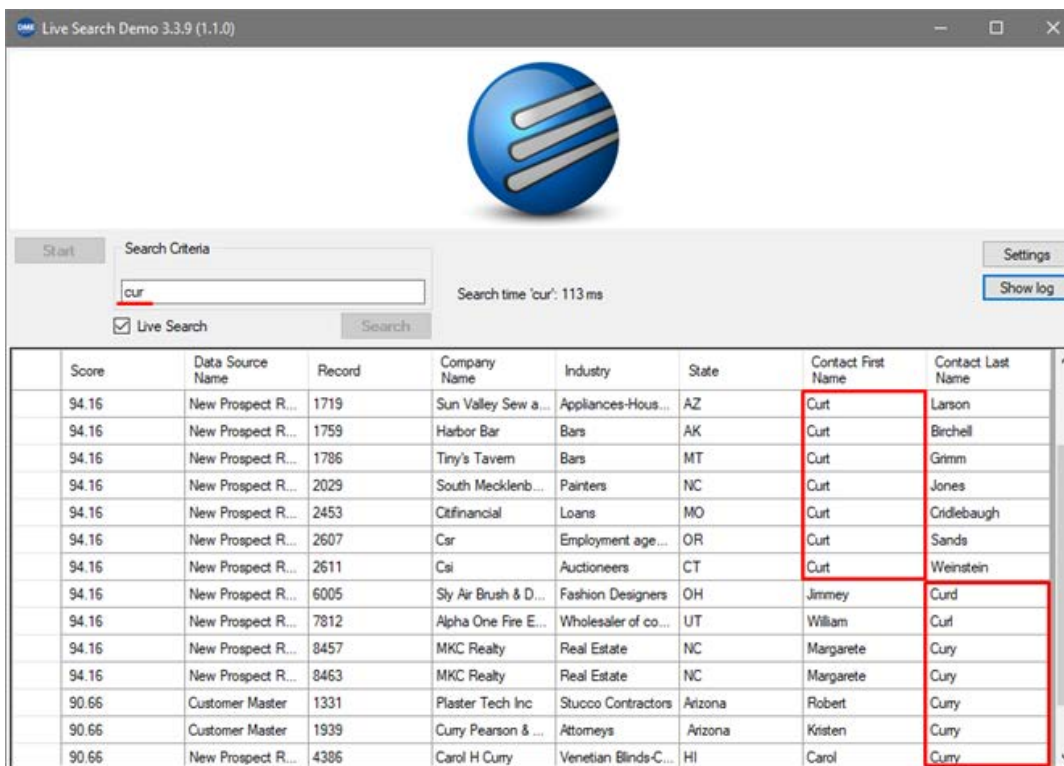
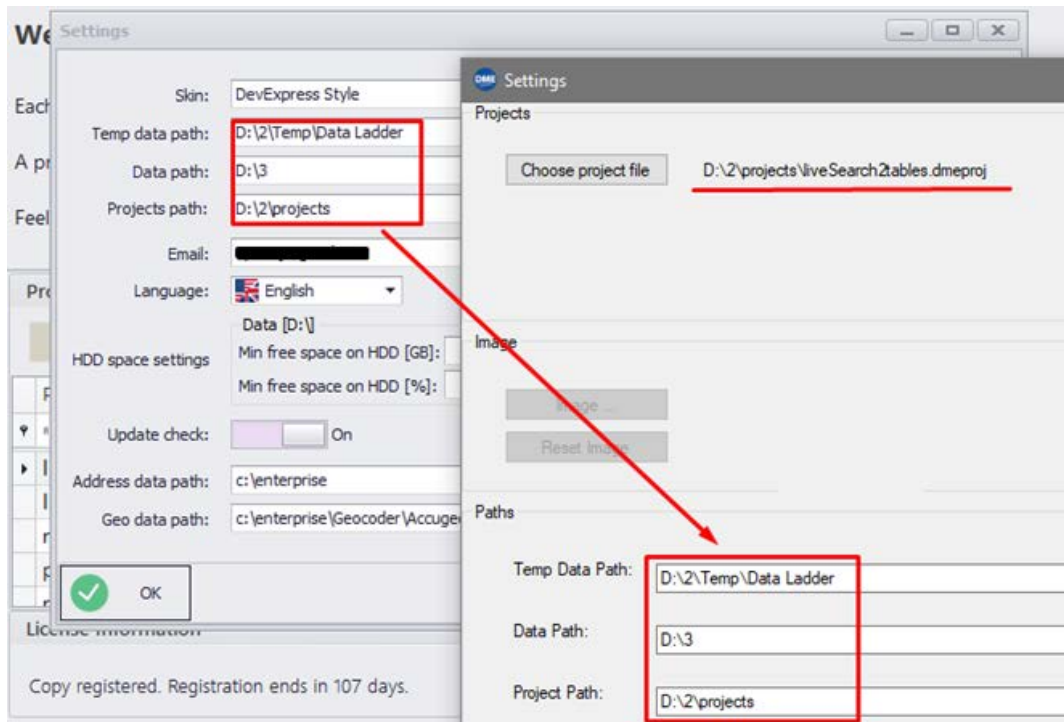
When all settings are done, User can start working with application.

- Press Start button. Loading message will appear in the right side of the window.
- The 'Search Criteria' text box will be active after loading is finished. "Loading finished successfully" will appear.
- User can enter a search word in Search Criteria field. This word will be matched with fields that are chosen in the DME project's Definition.
- User will get joined results from project in the result window



Prepared project can be used from API Project folder. In this case, copy project "liveSearchDemo.dmeproj" into DME project folder, or create a new one project with Data Match Enterprise.





## Dictionary:

- Start – starts loading selected project
- Search Criteria – text box field for entering search words
- Settings – window with ability to select project, change path, etc
- Increase speed – use API acceleration (rough and fast)
- Count of records – max count of matches per project
- Live Search – Disable/Enable Live Search option
- Search – use when Live Search option is disabled
- Hide Log – Hide/Unhide log window
- Log window – information about search results (words, time, count)



# ABOUT US

Data Ladder is a data quality software company dedicated to helping business users get the most out of their data through data matching, profiling, deduplication, and enrichment tools. Whether it's matching millions of records through our fuzzy matching algorithms, or transforming complex product data through semantic technology, Data Ladder's data quality tools provide a superior level of service unmatched in the industry.

**DataMatch Enterprise, was proven to find approximately 5-12% more matches than leading software companies IBM and SAS in 15 different studies.**

- Unparalleled Matching Accuracy and Speed For Enterprise Level Data.
- Cleansing beating IBM and SAS.
- Proprietary Matching Algorithms with a high level of matching accuracy at blazing fast speeds on Desktop/Laptop Hardware.
- Big Data Capability with data sets up to 100 Million Records.
- Deduplication and Merge Purge within and across any number of files.
- Suppression of existing customers or Do Not Contact from marketing lists.
- Advanced record linking technology to create data warehouses.
- Quick Data Profile tool finds and fixes Data Quality issues within the first 5 minutes of setup to improve match quality.

**Free Download**